

2018/5779 High Holidays

5779 is drawing near and we are looking forward to having you join us for the High Holidays. Our services are egalitarian and traditional, in both English and Hebrew with prayer books that offer transliterations to help everyone follow and join in. While being respectful of tradition, we strive to develop new ways to make the holidays more meaningful and relevant for today's modern Jews.

Our current spiritual leader Rabbi Margie Klein-Ronkin is expecting her second child and will be leaving the congregation at the end of the summer. We will miss having her on the Bimah, but are pleased to have engaged Rabbi Rebecca Weinstein to lead our High Holiday services this year as we prepare to search for Rabbi Margie's replacement. Rabbi Rebecca was recently ordained following completion of Rabbinical School at Hebrew College. During this time she gained considerable experience leading High Holiday services. Most recently she served as Rabbinic Intern at Temple Shir Tikva in Wayland and this fall she will be starting a full-time position as a Judaics teacher at Solomon Schechter Day School in Newton. With Rabbi Rebecca onboard we are confident that members and non-members alike will feel continuity in the form and spirit of our services.

While we hold our regular Shabbat services at the Ashland Community Center, due to space considerations **our High Holidays services are held at the Federated Church (118 Main Street) in Ashland.** All non-Jewish symbols are either removed or covered.

Schedule of Services for Rosh Hashanah

Erev Rosh Hashanah	Sunday	9/9	6:30 pm
Rosh Hashanah Day 1	Monday	9/10	9:30 am
Rosh Hashanah Day 2	Tuesday	9/11	9:30 am

Schedule of Services for Yom Kippur

Kol Nidre	Tuesday	9/18	6:00 pm
Morning Service	Wednesday	9/19	9:30 am
Neilah Service	Wednesday	9/19	6:30 pm

There will be a Children's Service oriented to children ages 5-9 during the Torah Service (approximately 10:45-11:30) on Rosh Hashanah Day 1 and Yom Kippur.

As is our custom, our services are open to the entire MetroWest community. **Although we do not require membership or tickets to attend our services, for non-members we do have an expected donation to help cover our considerable costs.** Sha'arei Shalom has always placed a high value on opening our services to all; we depend on these donations to help us keep this possible. Expected donations are:

Individuals: \$275.00 Couples: \$300.00 Families: \$325.00

Please mail your contribution prior to the holidays to the P.O. Box listed above. If your situation allows for a larger contribution, we would greatly appreciate it.

We hope you will join us for the High Holidays. We also welcome you to join us for any of our other holiday, Shabbat, and social events. Come check out what makes us one of the warmest, most innovative Jewish communities in the area! For more information about us, visit our website at <http://www.shaareishalom.org> or call 508-231-4700. **If you are not already a member, we hope that you will consider joining the congregation. Members do not have an additional cost for High Holiday attendance. Consider applying your High Holiday donation toward membership and help us to continue to grow and serve the MetroWest Jewish community.**

Wishing you and yours a Happy and Healthy New Year.

Jennifer Gordon
President, Sha'arei Shalom



P.O. Box 454 Ashland, MA 01721
 info@shaareishalom.org
 508-231-4700

2018/5779 HIGH HOLIDAYS REGISTRATION – PLEASE RETURN TOP PORTION OF THIS FORM BY SEPTEMBER 8, 2018

NAME(S):	TELEPHONE:
ADDRESS:	EMAIL:

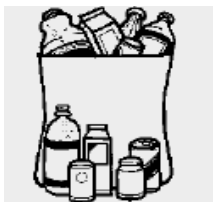
CHILD(REN)S NAME(S) AND AGE(S): _____

Donation: \$275 single attendee \$300 couple \$325 family

Additional donation: _____

Date	Service	Time
Sunday, September 9	Erev Rosh Hashanah	6:30 pm
Monday, September 10	Rosh Hashanah Day 1	9:30 am
Tuesday, September 11	Rosh Hashanah Day 2	9:30 am
Tuesday, September 18	Kol Nidre	6:00 pm
Wednesday, September 19	Yom Kippur	9:30 am
Wednesday, September 19	Neilah	6:30 pm

- **SCHEDULE**
All services will begin promptly at the scheduled times shown above.
- **SEATING**
Seating is limited, and on a first-come/first-serve basis. Please plan to arrive early to avoid disappointment. Due to safety considerations, children under the age of 10 are not allowed in the balcony seating area.
- **BUILDING**
Although we meet in a church, during our services all non-Jewish symbols are either removed or covered.
- **PARKING and ACCESSIBILITY**
The church parking lot is generally not available for service attendees. Parking near the church is available in the parking lot across from the Ashland Public Library (Front St.) For weekday services we ask that you avoid parking in the lots near Town Hall as those spaces are needed by local businesses. If you need to park closer or need an accessible entrance to the church due to physical limitations, please contact us at hh@shaareishalom.org
- **ETIQUETTE**
We realize that holiday morning services can be long, especially for our youngest congregants. We do ask that all congregants refrain from eating and drinking in the sanctuary. If you are in need of a break or a snack, please step out of the service and return when you are ready.
- **ADDITIONAL INFORMATION**
If you have any questions, please contact us at 508-231-4700 or at hh@shaareishalom.org



Sha'arei Shalom's Annual Food Drive 2018

Please help support those served by

The Ashland Food Pantry

Please bring items to High Holiday Services

Our goal is to have every family bring at least one item

Most requested items:

Diapers

Evaporated milk

Tuna fish

Canned soups

Canned fruits

Instant pudding

Vegetable oil

Mayonnaise

Spaghetti sauce

Granola Bars

Ramen Noodles

Raisins or dried fruit

Boxed rice

Cold cereals

Hot cereals

Peanut butter

Instant potatoes

Boxed pastas

Juice Boxes

Small bags of Rice

